



Piddle Valley CE First School

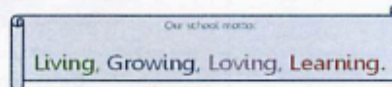


Piddletrenthide, Dorchester, Dorset. DT2 7QL

Tel:01300 348219

Email: office@piddlevalley.dorset.sch.uk

Head of School: Mrs. Jemma Moore



Company Reg No: 08066324 England

Newsletter 06.09.2024

Note from Mrs Moore

Welcome back to you all and I hope you had some quality family time and enjoyed your summer holidays. A special welcome to our new preschool parents, it's great to have you as part of our school community!

The start of a new school year is always exciting with children moving up into new year groups, with new teachers and new classrooms or having new classmates within their class. I hope everyone found their way on Tuesday, it will take us all a few days to get used to these changes. While the vast majority of children make these transitions really smoothly, please don't hesitate to talk to your child's class teacher if you have any concerns, we are all here to help as best we can.

At the beginning of a new school year we set our expectations for learning and behaviour for the rest of the academic year. The teachers will be working hard with their children over the coming weeks to establish classroom

Whole School News / PTFA Update

Facebook: Please follow our school Facebook page, **Piddle Valley CE First School**, where we will share regular pictures and updates.

Attendance: Overall school attendance for this week: **93.16% - AMAZING!!**

Reminder: We are a nut free school. Please DO NOT send your child into school with anything containing nuts.

routines and to set expectations for behaviour, learning and working well together. I know how vital working in partnerships with parents is. It's so important for children to find school a positive and rewarding experience. I hope you will support our high expectations in all areas, especially in terms of behaviour and achievement. Please help us by ensuring children arrive at school at between 8.30am and 8.45am in preparation for registration at the start of the day's learning. The school gates will be locked at 8:45am promptly. If your child arrives after this time they will need to go through the main school gate and register at the main reception. At this point your child will be marked in the register as 'late'.

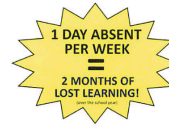
If you have any questions or queries please talk to your child's class teacher in the first instance. If you need to speak to me, I am usually in the playground/outside in the mornings and afternoons. If not please see Mrs Thomas in the Office to make an appointment. I'm really looking forward to another happy and successful academic year!

Best Wishes

Mrs Moore

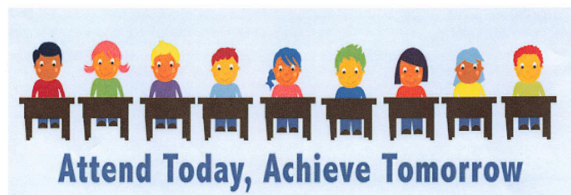
Attendance Facts (Primary)

'AAA'
Aiming High for
Awesome Attendance



Days off school add up to lost learning!

100% attendance	0 weeks of missed learning	Best chance of success.	
96% attendance	1 week 3 days of missed learning	Well Done!	
95% attendance	2 weeks of missed learning	Poor attendance	
92% attendance	3 weeks 1 day of missed learning	Worrying!	
91% attendance	3 weeks 2 days of missed learning	Very Poor attendance	
75% attendance	9 weeks 2 days of missed learning	Extremely concerning!	



Class News and other bits

Forest Class

WOW! What a lovely start to the new academic term!

The children have all come in beautifully and so settled considering they have had a 6 week break! They have all had a fantastic time getting to know any new classmates and enjoying the activities offered. The new topic for this term will be 'All about me!' This is to help develop their communication and language and to encourage being part of a team. A letter will go out to explain PE days, Forest School and what happens with reading books etc very soon, so please keep your eyes peeled! Just to mention, on a Friday, Reception children can come to school wearing their Forest School clothes and there is no need for them to come in with their uniform. We have waterproofs to use over their clothes so they will not need a change of clothes for after Forest School. Have an amazing weekend!

Ocean Class

It has been lovely to welcome the new Year 1's to Ocean Class this week, and to see the Year 2's again after the summer.

We have had a busy week and have all done lots of activities - making our class charter, talking about our summer holidays, writing, reading and making butterfly pegs for our reading tree.

Ocean class have already started earning stars for the star jar, which once they



have filled they will earn a class reward!
(They are all very excited about this already!)

I will shortly be sending a letter out with key information (about PE days, reading records, etc). In the meantime, have a lovely weekend!

PIDDLE VALLEY CE FIRST SCHOOL
Piddletrenthide - Dorset

**PARENT AND TODDLER
COFFEE MORNING**

EVERYONE WELCOME!

**JOIN US FOR A COFFEE, A CHAT,
MEET OTHER PARENTS AND A
CHANCE TO VIEW OUR
SCHOOL AND PRESCHOOL**

NEXT DATES:
WEDNESDAY 11TH SEPTEMBER
WEDNESDAY 2ND OCTOBER
9.15AM - 10.45AM

Piddle Valley CE First School,
Piddletrenthide DT2 7QL
office@piddlevalley.dorset.sch.uk

Amazon Class

Well done everybody for completing the first week back in your new school year. It has been lovely to hear all about the lovely things that the children have been doing during the summer.

I would like to welcome Oliver and Florence to Amazon Class.

Although we have only just started back we have taken the opportunity this week to learn a few facts about Albert Einstein, Isaac Newton and Roald Dahl.

Our PE lessons will be Monday and Tuesday.
Our Forest school is Friday afternoon.
Homework will be sent out on Friday and to

be returned the following Thursday, which will start next week.

Have a lovely, well deserved weekend.

Dates for your Diary

Wednesday 11th September

Wednesday 2nd October

Parent and Toddler Coffee mornings

Tuesday 15th October

Flu Immunisations

Wednesday 16th October

Wessex Wild - Forest Class

Literacy Festival - Ocean Class

Thursday 24th Oct/ Friday 25th Oct

Inset Days

Monday 28th Oct - Friday 1st Nov

Half Term

Tuesday 5th November

Ocean Class trip to Hen House Farm

Clubs

Sports Leaders (Lunchtimes)

Monday 12.30-1.00

Sports Club

Monday 3.15-4.15 (charges apply)
(Bookings made via School Gateway)

Art Club

Monday 3.15-4.15

Woodwork Club

Thursday 3.15-4.15

Gardening club (Lunchtimes)

Friday 12.30-1.00

Forest School Club

Friday 3.15-4.15 (Charges apply)
(Bookings made via School Gateway)

Breakfast Club

Open every day from 8.00am
(Bookings made via School Gateway)

After School Club

4.30/5.00/5.30pm pick up options
(Bookings made via School Gateway)